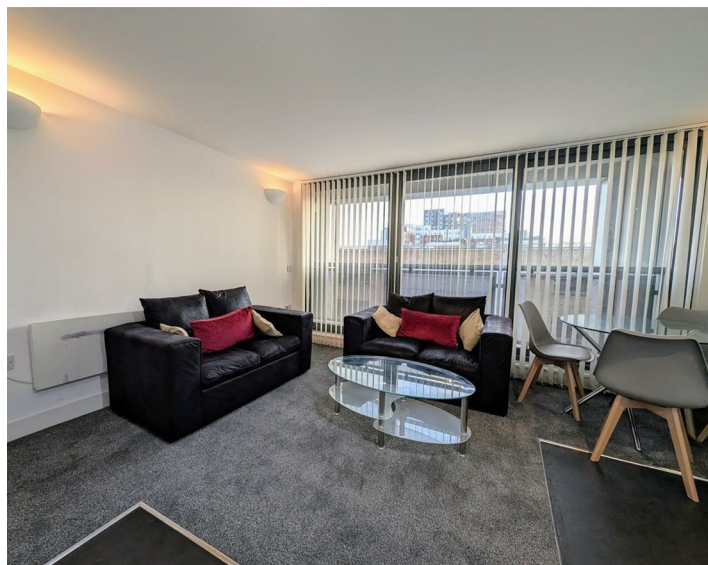




Apt 9 11 Epworth Street, Liverpool, L6 1LY  
£950 Per Month

www.  
cityresidential  
.co.uk





About the Property

Available Now!!

This well-presented two bedroom, fifth floor apartment in the sought after 11 Epworth Street Development. The apartment is designed with a contemporary open plan living area to maximise space.

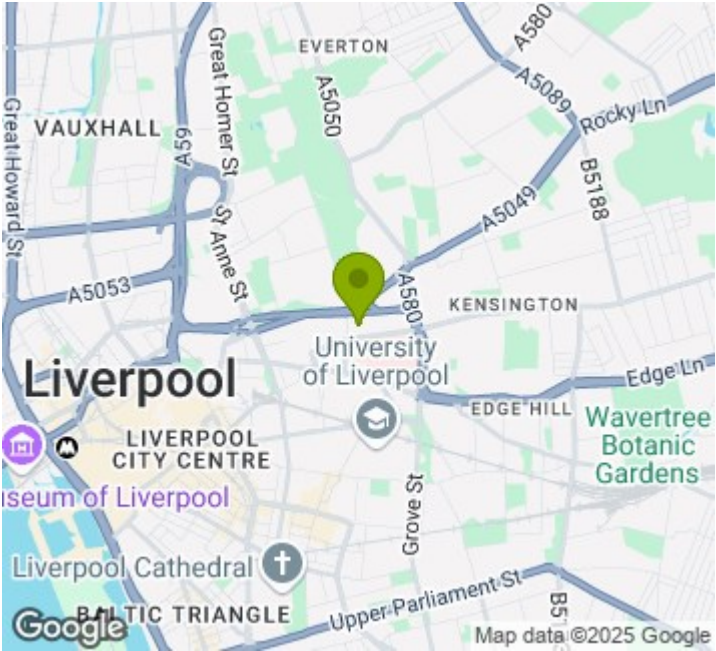
The property briefly comprises: entrance hall, open plan living/dining room with modern fitted kitchen, double master bedroom with a balcony and en suite shower room, second double bedroom and family bathroom complete the accommodation.

This property is perfect for anyone needing to be close to The Royal Liverpool Hospital and the Dental School.

Early viewing is strongly recommended to truly appreciate the accommodation on offer.

11 Epworth Street is serviced by a lift to all floors and there is no parking with this property.

- Amazing Location
- Available Now
- Fully Furnished
- Balcony Access
- Viewings Essential
- Council Tax Band - B
- EPC Rating - C
- Deposit Payable £1096



Energy Efficiency Rating

	Current	Potential
Very energy efficient - lower running costs		
(92 plus) <b>A</b>		
(81-91) <b>B</b>		
(69-80) <b>C</b>		
(55-68) <b>D</b>		
(39-54) <b>E</b>		
(21-38) <b>F</b>		
(1-20) <b>G</b>		
Not energy efficient - higher running costs		
	<b>75</b>	<b>85</b>
<b>England &amp; Wales</b>	EU Directive 2002/91/EC	



City Residential  
81/87 Victoria Street, The Old Haymarket, Liverpool L1 6DG  
T: 0151 231 6100 F: 0151 231 6105  
E: sales@cityresidential.co.uk



WWW.  
cityresidential  
.co.uk